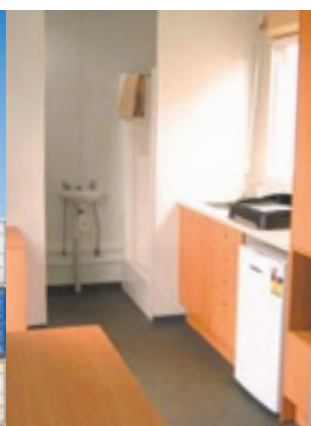
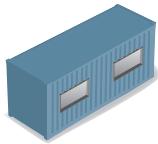


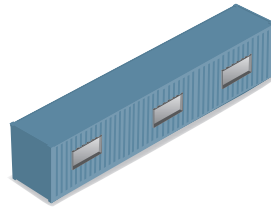
## residential 20'

Description	Quantity
Door	2
Windows with wind up security grill	2
Fixed wall air conditioning unit – 2.5 horsepower / 10 amp	2
Kitchen cupboards (drawers for basic cutlery and crockery, and bench)	2
Double beds	2
Clothing bins under bed	2
60 Litre zip hot water system	1
Sink with mixer	2
Clothes cupboards	2
Bar fridge	2
Fold away table	2
Fold away chairs	2
Bracket for TV, DVD player and a stereo	2
Microwave	2
Double power point	2





20'



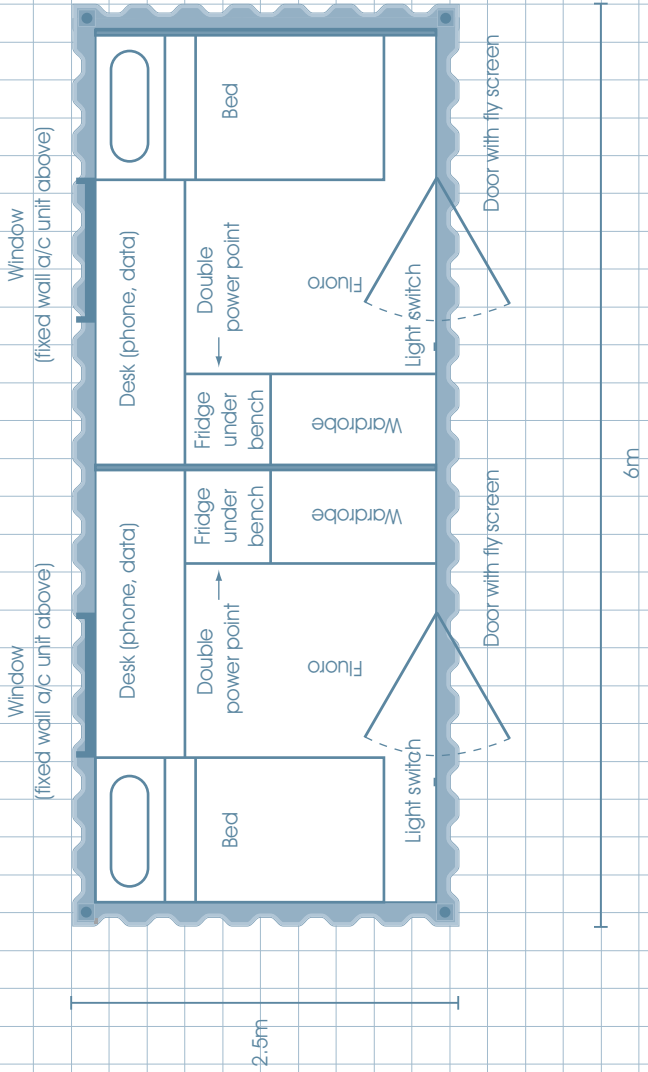
40'

### dimensions

	20' low	20' high	40' low	40' high
length (external)	6.1m	6.1m	12.2m	12.2m
width (external)	2.5m	2.5m	2.5m	2.5m
height (external)	2.6m	2.9m	2.6m	2.9m
length (internal)	5.9m	5.9m	12m	12m
width (internal)	2.4m	2.4m	2.4m	2.4m
height (internal)	2.4m	2.7m	2.4m	2.7m

### capacity

	20' low	20' high	40' low	40' high
cubic capacity	32.8m <sup>3</sup>	37m <sup>3</sup>	67.2m <sup>3</sup>	75.9m <sup>3</sup>
empty weight	2,400kg	2,500kg	4,000kg	4,200kg
max contents weight	21,700kg	21,600kg	26,500kg	26,300kg
max total weight	24,100kg	24,100kg	30,500kg	30,500kg



All floors poly-urathane seal